

“ CEUS allows us to optimise our daily routines, to achieve the correct diagnosis faster and to improve solutions for unclear kidney cases ”



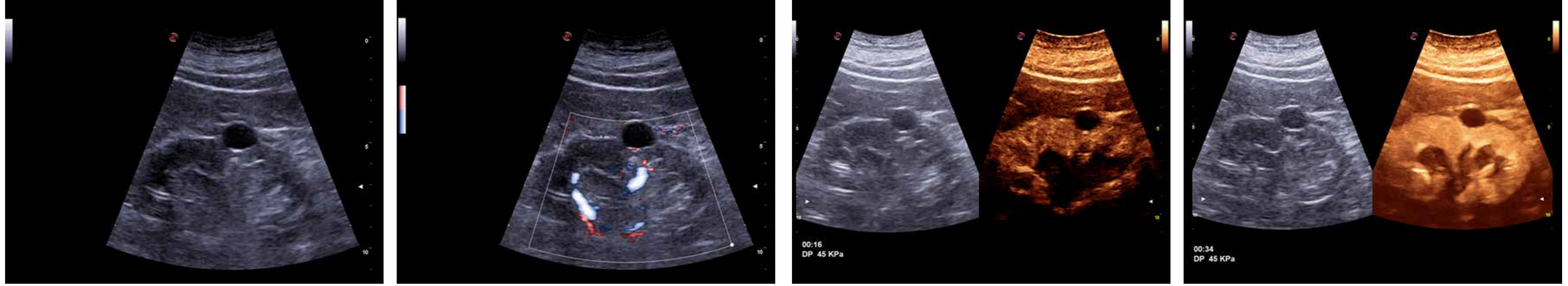
Contrast enhanced ultrasound (CEUS) of the kidney cysts by using the Bosniak classification

Case studies courtesy of
Dirk-André Clevert, MD

Professor of Radiology Interdisciplinary Ultrasound-Center,
Department of Clinical Radiology University of Munich-Grosshadern Campus,
Germany

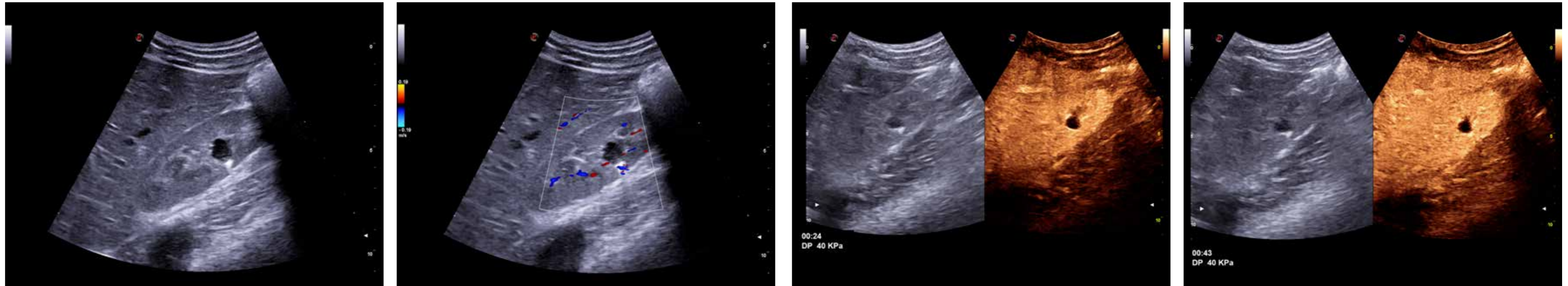
Category I

Native B-mode sonography criteria	Contrast enhanced ultrasound criteria	Malignancy rate
<ul style="list-style-type: none"> . Thin walls . No septa . Sharp margins . Without any calcifications . No solid components 	<ul style="list-style-type: none"> . No contrast enhancement 	~0%



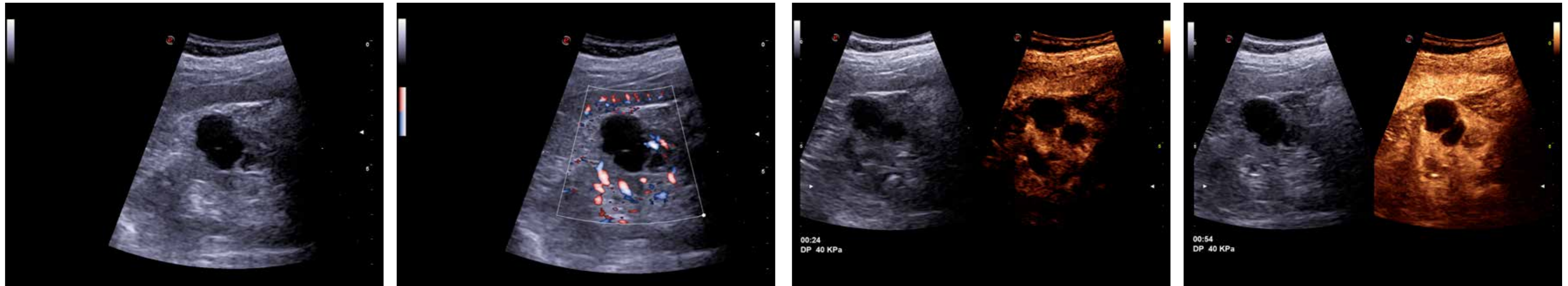
Category II

Native B-mode sonography criteria	Contrast enhanced ultrasound criteria	Malignancy rate
<ul style="list-style-type: none"> . Septa thinner than 1 mm. . Septa can show fine calcifications 	<ul style="list-style-type: none"> . No contrast enhancement or discrete contrast enhancement of the septa 	~0%



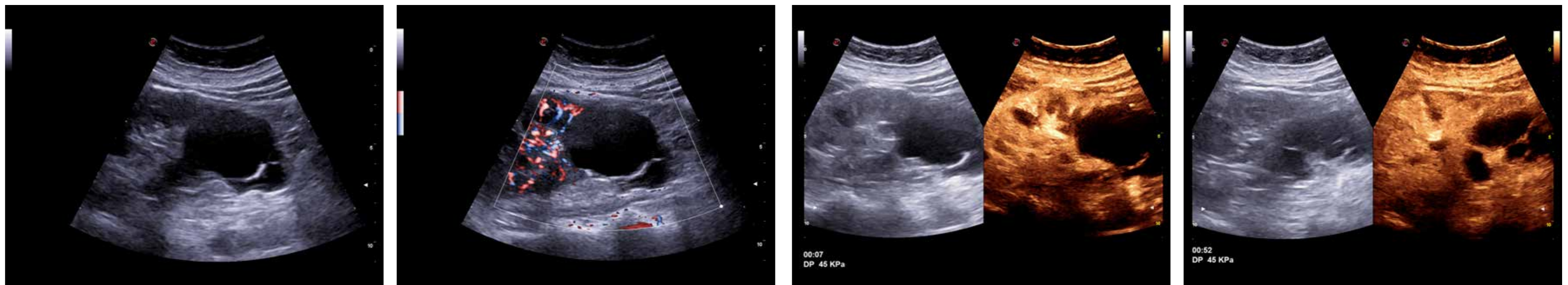
Category II F

Native B-mode sonography criteria	Contrast enhanced ultrasound criteria	Malignancy rate
<ul style="list-style-type: none"> . Multiple septa . Minimally thickened walls . Thin or thick calcifications 	<ul style="list-style-type: none"> . Discrete contrast enhancement of the walls or septa 	~5%



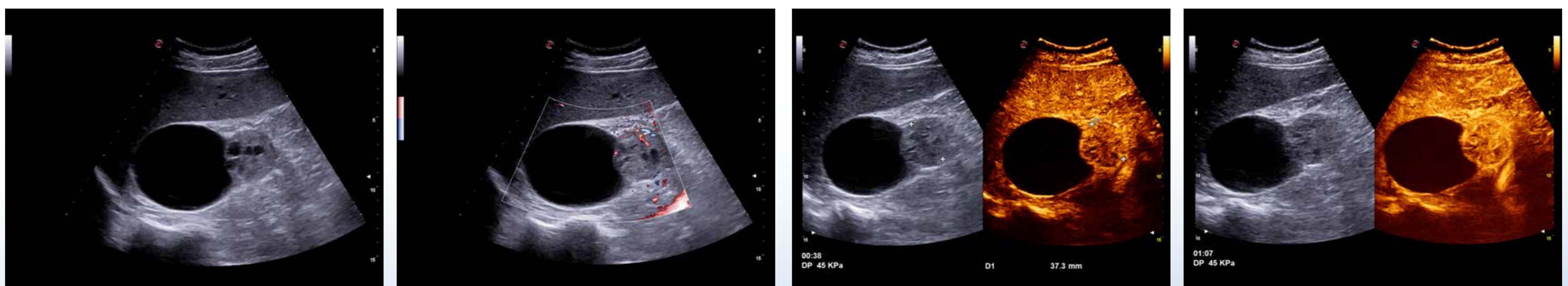
Category III

Native B-mode sonography criteria	Contrast enhanced ultrasound criteria	Malignancy rate
<ul style="list-style-type: none"> . Homogenous or irregular thickening of the walls and/or septa . Irregular calcifications 	<ul style="list-style-type: none"> . Multiple contrast enhancing septa 	~50%



Category IV

Native B-mode sonography criteria	Contrast enhanced ultrasound criteria	Malignancy rate
<ul style="list-style-type: none"> . Homogenous or irregular thickening of the walls and/or septa . Irregular calcifications . Solid components 	<ul style="list-style-type: none"> . Multiple contrast enhancing septa . Irregular contrast enhancing soft tissue components 	~100%



Contrast-Enhanced Ultrasound (CEUS) of the Kidneys by Using the Bosniak Classification. Rübenthaler J, Bogner F, Reiser M, Clevert DA. Ultraschall Med. 2016 Jun;37(3):234-51

NEVER STOP SEEING THE UNSEEN.

Esaote S.p.A. - sole shareholder company - Via Enrico Melen 77, 16152 Genova, ITALY, Tel. +39 010 6547 1, Fax +39 010 6547 275, info@esaote.com
 CnTI™: The use of Contrast Agents in the USA is limited by FDA to the left ventricle opacification and to characterization of focal liver lesions.
 Technology and features are system/configuration dependent. Specifications subject to change without notice. Information might refer to products or modalities not yet approved in all countries. Product images are for illustrative purposes only. For further details, please contact your Esaote sales representative.