

“ CEUS allows us to optimise our daily routines, to achieve the correct diagnosis faster and to improve solutions for unclear cases ”



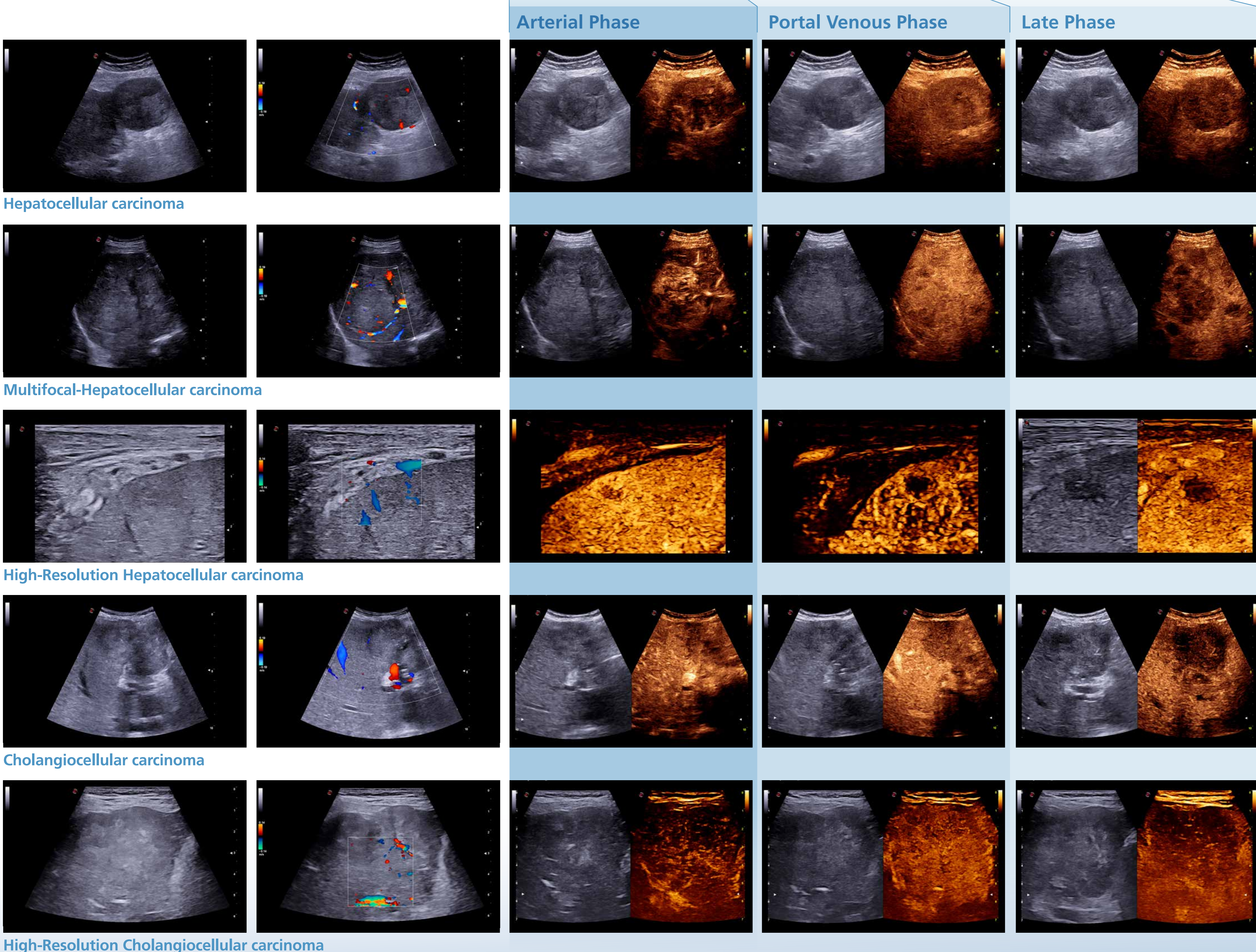
CEUS Contrast enhanced ultrasound (CEUS) in primary liver cancer

Case studies courtesy of Dirk-André Clevert, MD

Professor of Radiology Interdisciplinary Ultrasound-Center, Department of Clinical Radiology University of Munich-Grosshadern Campus, Germany

Lesion		> Arterial Phase	> Portal Venous Phase	> Late Phase
HCC Hepatocellular carcinoma	Typical features	Hyperenhancing, complete Nonenhancing areas (if large)	Isoenhancing	Hypoenhancing (slightly or moderately) Isoenhancing
	Additional features	Basket pattern, chaotic vessels Enhancing tumor thrombus Hypo/ nonenhancing	Nonenhancing regions	Nonenhancing
CCC Cholangiocellular carcinoma	Typical features	Rim-like hyper-enhancement, central hypoenhancement	Hypoenhancing	Nonenhancing
	Additional features	Nonenhancing regions, inhomogeneous hyperenhancement	Nonenhancing regions	Nonenhancing regions

Guidelines and Good Clinical Practice Recommendations for Contrast Enhanced Ultrasound (CEUS) in the Liver - Update 2020 - WFUMB in Cooperation with EFSUMB, AFSUMB, AIUM, and FLAUS, Ultraschall Med. 2020 Jul 24. Clinical acquisitions were performed with the Esaote CnTI™ advanced technology.



NEVER STOP SEEING THE UNSEEN.

Esaote S.p.A. - sole-shareholder company - Via Enrico Meloni 77, 16152 Genova, ITALY, Tel. +39 010 6547 1, Fax +39 010 6547 275, info@esaote.com

CnTI™: The use of Contrast Agents in the USA is limited by FDA to the left ventricle opacification and to characterization of focal liver lesions.

Technology and features are system/configuration dependent. Specifications subject to change without notice. Information might refer to products or modalities not yet approved in all countries. Product images are for illustrative purposes only. For further details, please contact your Esaote sales representative.