

MyLab™ Desk

MyLab™ Share

Connect to possibilities with Esaote digital tools



esaote
HEALTH WITH CARE

MyLab™Desk

Review and complete examinations offline.
Anytime.

MyLab™Desk is a complete, modular suite of digital tools designed to display, share, review and process ultrasound images. Interpreted by an experienced professional, images and quantifications offer support with the diagnosis. An extensive measurements package, that includes optional tools and features such as XStrain™, AutoEF, Obstetric Automatic Measures and Advanced Elastography, simplifies the workflow and **allows to report the examination directly from the computer.**

MyLab™Desk is your intelligent workstation.

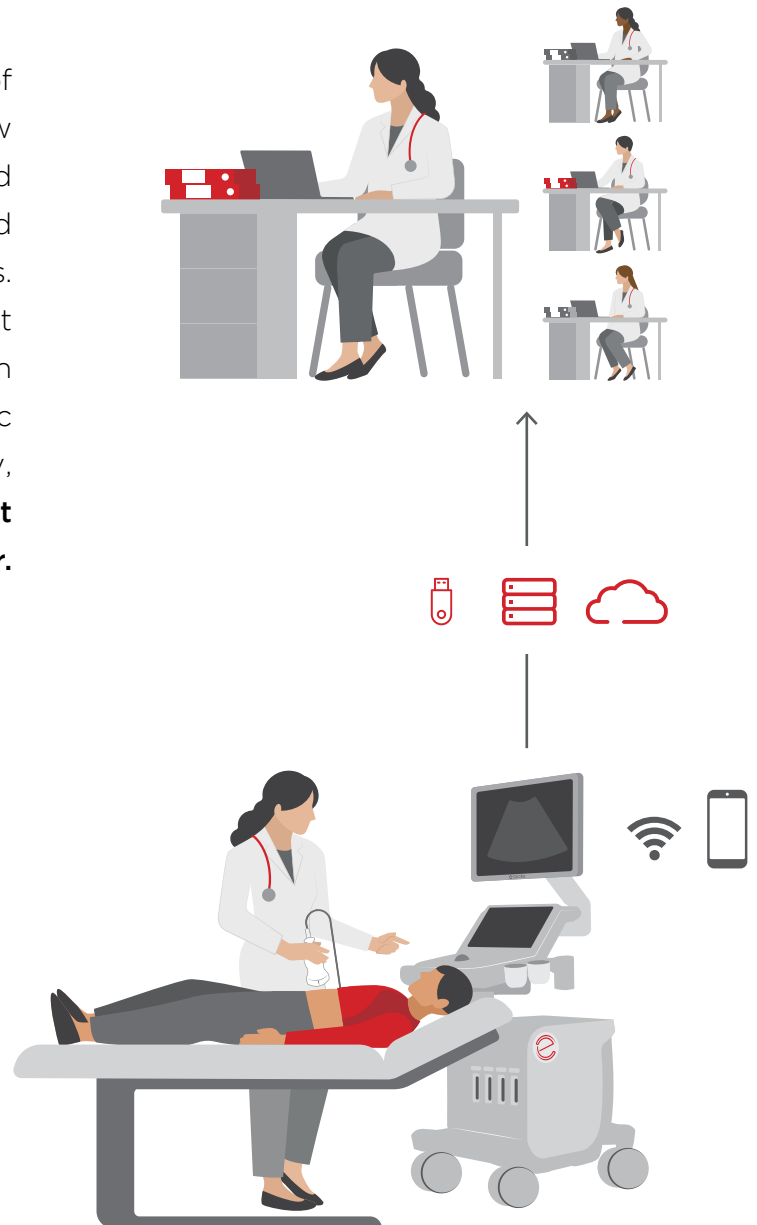
- ✓ Easy to Use
- ✓ Easy Access
- ✓ Multi Connection
- ✓ Multi View

Download

MyLab™Desk

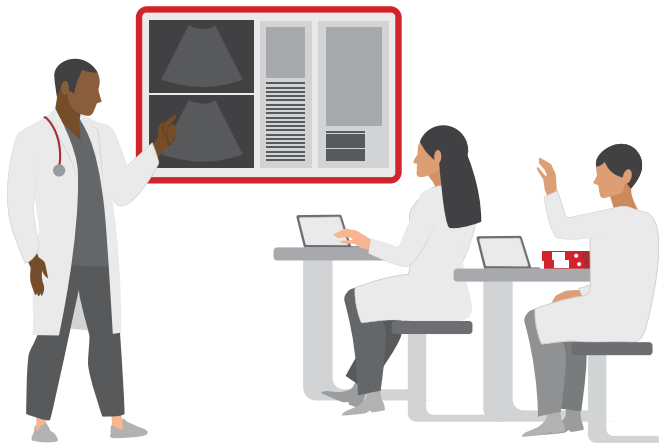


MyLab™Desk is a Medical Device Software designed to import still frames, videos and reports from the MyLab™ ultrasound platform devices.

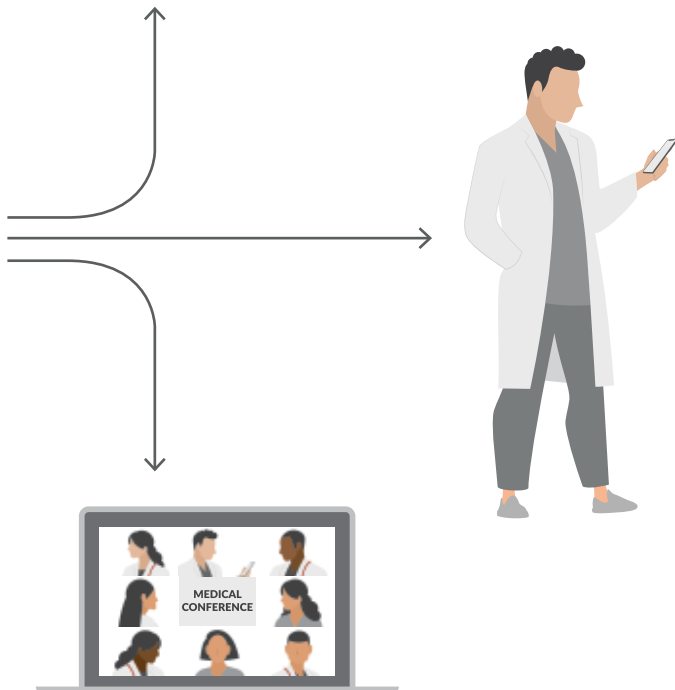


MyLab™Share

Collaborate in real time with experts.
Anywhere.



MyLab™Share is an Android® app designed to connect the eStreaming feature integrated in Esaote's ultrasound systems to remote experts for real-time image sharing. **MyLab™Share** establishes the communication channel, eStreaming transfers scanning images to a PC or mobile for remote collaboration, education and training purposes. **This allows the care team to receive support from healthcare experts through a remote peer-to-peer collaboration*.**



MyLab™Share is your bridge to the world.

- ✓ Quick Sharing
- ✓ Video Streaming & Instant Image
- ✓ Transmission Security
- ✓ Access Control

Download
MyLab™Share

MyLab™Share is a mobile application intended to be used with an Esaote MyLab™ equipment with eStreaming capability.



* Images reviewed from remote devices are not to be intended for diagnostic purposes.



160000460MA Ver.01



MyLab™ Desk

Esaote S.p.A. - sole-shareholder company

Via Enrico Melen 77, 16152 Genova, ITALY, Tel. +39 010 6547 1, Fax +39 010 6547 275,
info@esaote.com - www.esaote.com

MyLab™ is a trademark of Esaote S.p.A. Android® is a registered trademark of Google. MyLab™Share is not a Medical Device Software and it is not intended for diagnostic purposes. Technology and features are device/configuration-dependent. Specifications are subject to change without notice. Information might refer to products or modalities not yet approved in all countries. Product images are for illustrative purposes only. For further details, please contact your Esaote sales representative.

Italian design

Please visit us online
for more information

