

**O•scan** SMART  
Extremity MRI



**esaote**  
HEALTH WITH CARE

# A dedicated extremity MRI

**O-scan SMART** is a comfortable and non-claustrophobic system dedicated to clinical investigations of the joints and limbs. The unique system's efficiency and economics make **O-scan SMART** an ideal solution for standalone specialty clinics or working alongside other units in radiology departments. A valuable resource for **Radiologists, Orthopedists, Sports Medicine clinics, Hand clinics, Podiatrists and Rheumatologists.**

**O-scan SMART** is the perfect response to today's needs for cost containment without compromising quality and workflow.



No claustrophobia, patient completely outside the magnet



Easy installation in minimum space, fit in 9m<sup>2</sup> (100 ft<sup>2</sup>)



Plug and play solution and low power consumption



Improved throughput and simplified workflow with real-time positioning and the AgilExam advanced feature



A complete range of high-quality imaging capabilities for extremities thanks to the eXP\* technology platform

\*Optional

All the musculoskeletal MRI performance you need in an easy-to-install, easy-to-run solution.

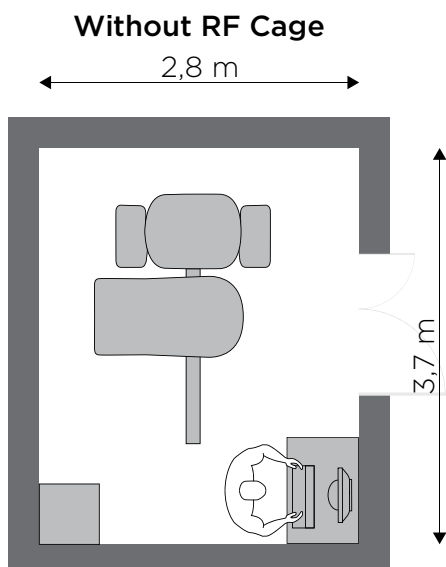
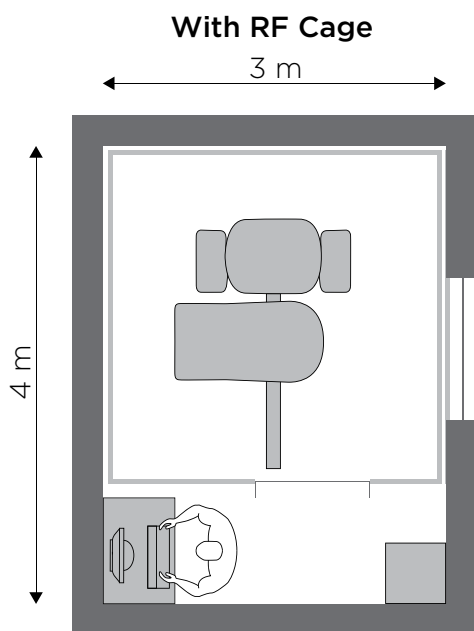
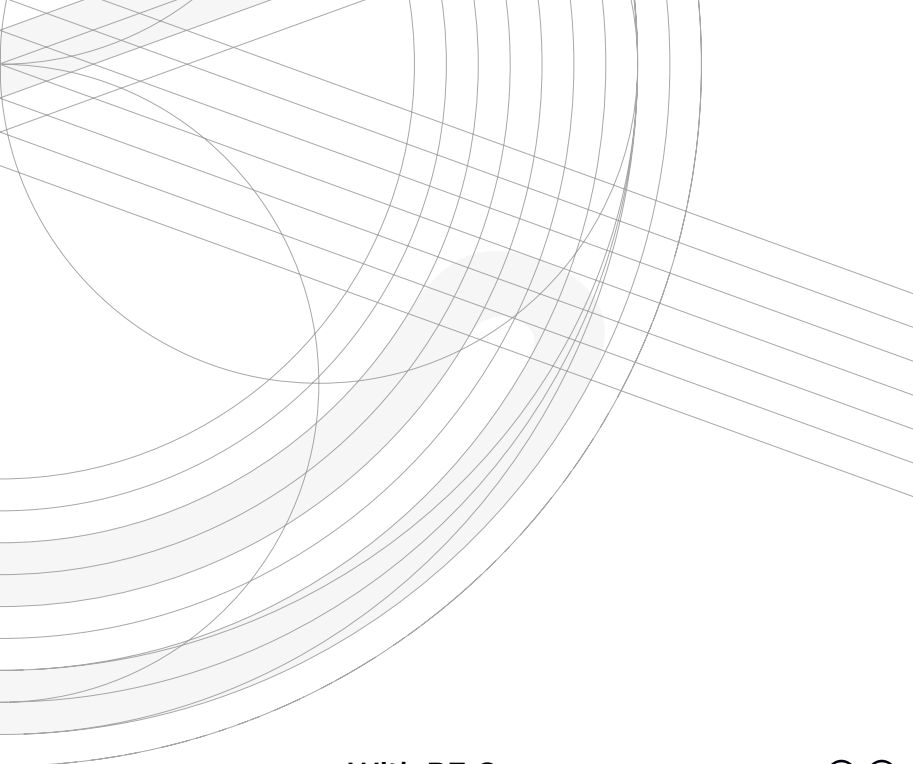


# The smart solution for comfort and installation, also for small sites

The **O-scan SMART** is a powerful MSK system in a small package. This technology embodies Esaote's extensive expertise in MSK MRI, providing top-tier image quality to satisfy the industry's most discerning users.

A unique standalone solution that can easily work alongside whole-body scanners in radiology departments, opening time slots for emergent cases and improving daily workflow.





## Compact Installation

With or without the RF cage.



## Designed for Comfort

Only the extremity under investigation is placed in the system.



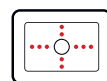
## The Latest MRI Technology

Metal Artifact Reduction to suppress or reduce in-plane metal distortions; 3D SHARC for cartilage imaging; patented technology like SpeedUp for enhanced throughput.



## Dynamic Joints Evaluation

True-Motion\* MRI for a dynamic imaging assessment of pathologies during joint movement.



## Real-Time Monitor

To check patient positioning directly from the gantry.

\*Optional

# eXP Technology

**eXP Technology\*** delivers an overall performance improvement thanks to sophisticated MRI software techniques such as Speed-Up and TR reduction, and 3D MRI sequences for advanced imaging.

- ✓ SpeedUp
- ✓ 3D isotropic 0.4mm
- ✓ X-Bone
- ✓ True-Motion
- ✓ Metal Artifact Reduction

The real-time acquisition allows the operator to check patient positioning directly from the system monitor.

\*Optional pack.

**Increased Productivity**  
Scan more patients per day.

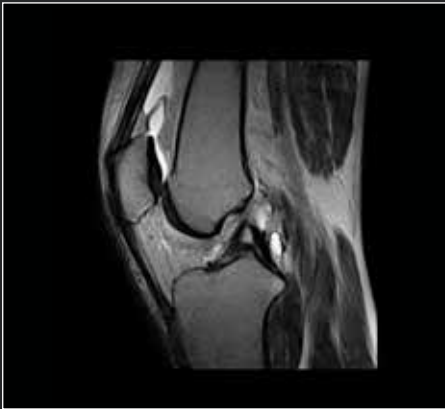
**Enhanced Diagnostic**  
Increased image resolution and extra sequences, with more flexibility, within the same protocol time.

**Improved Patient Experience**  
Reducing the scan times means more time for patient care and comfort.





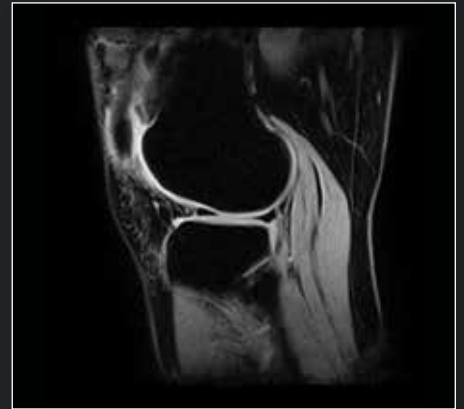
# Samples of clinical images



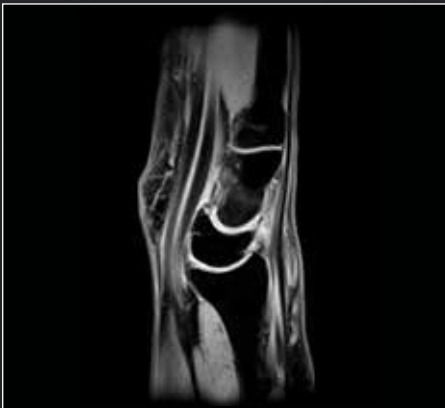
Knee FSE T2 Sagittal



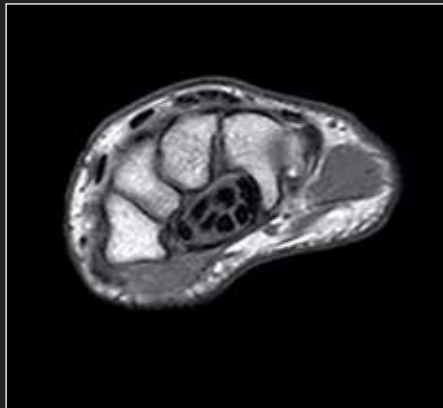
Knee 3D SHARC Axial



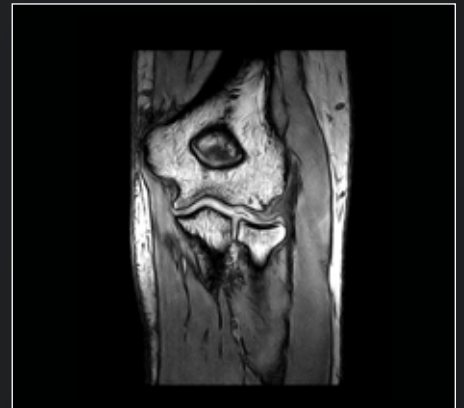
Knee XBONE Sagittal



Wrist XBONE Sagittal



Wrist SpinEcho T1 Axial



Elbow 3D SHARC Coronal



Ankle STIR Sagittal



Ankle GE T2 Coronal

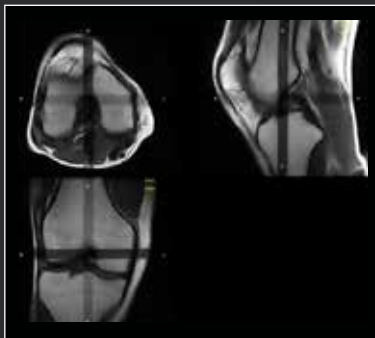


Foot SpinEcho T1 Axial

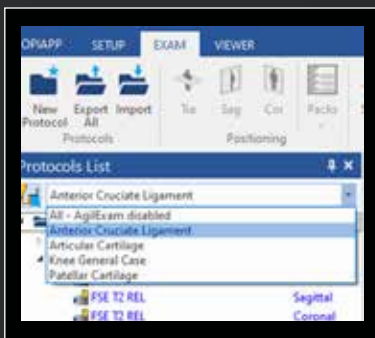


**AgilExam\*** a three-click advanced software package for slice auto-alignment, that speeds up examination workflow and improves quality consistency.

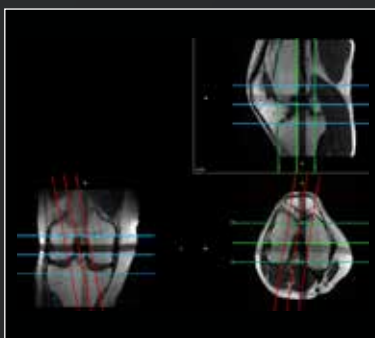
**AgilExam** automatically positions the slices, both in terms of angulation and number, according to the laterality and size of the anatomy.



Easy patient positioning through Real-Time monitor.



Select the desired examination task from the **AgilExam** task list.



Check the automatic slice positioning and confirm to execute the protocol.

\*Optional pack.



# eXP Technology

**O-scan SMART** offers advanced scan techniques to reduce scan time, perform 3D isotropic acquisitions, reduce metal artifacts and perform real-time motion imaging of joints.

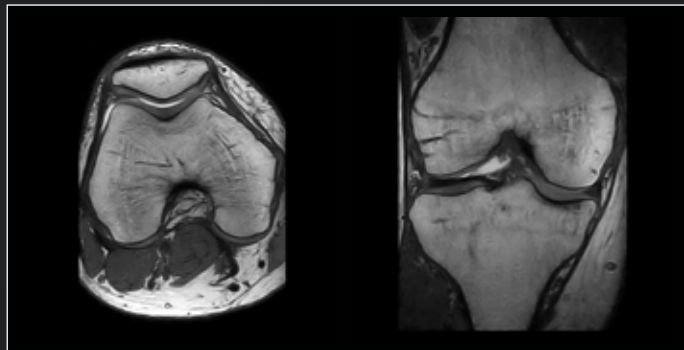
## True-Motion

The **True-Motion** technique provides an additional tool to improve patient care, particularly in professional-grade sports medicine, allowing the study of joint functionally.

### 3D Imaging



3D SHARC Isotropic 0,4 mm



MPR

### Metal Artifact Reduction



\*Optional pack.

# Engineered for Performance



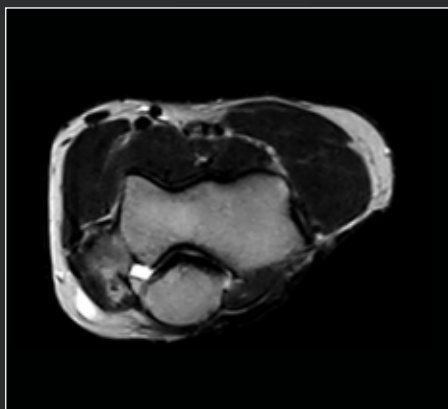
Knee PD coronal



Knee FSTIR coronal



Knee PD sagittal



Elbow FSE T2 axial



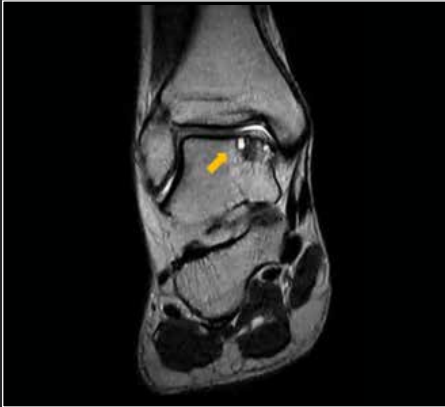
Elbow GE T1 coronal



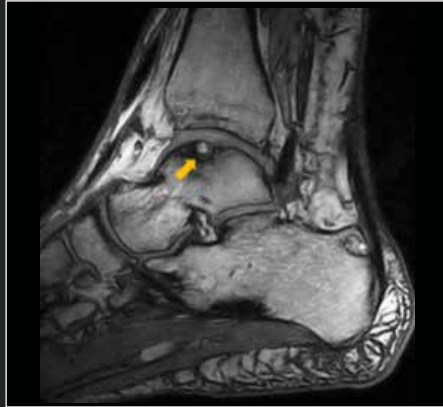
Elbow FSTIR coronal



Ankle XBONE sagittal



Ankle FSE T2 coronal



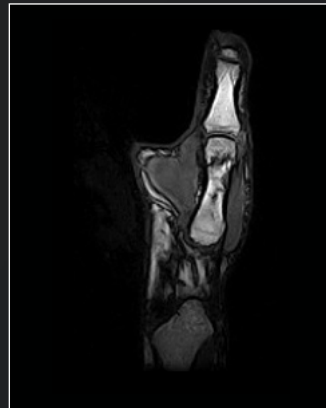
Ankle 3D SHARC sagittal



Wrist GE T1 coronal



Wrist XBONE T2 coronal



Finger 3D SHARC sagittal



Hand SE T1 coronal



Foot XBONE T1 coronal

# Embrace the Excellence

- ✓ Dedicated coils to obtain excellent performance for each examinable anatomy.
- ✓ Specifically designed for extremities
- ✓ Click-in system, no cables = more reliable, easier to use
- ✓ Automatic coil recognition



Knee, Calf and  
Ankle coils of large  
size  
(DPA)



Hand/Wrist\*  
Elbow coils of small  
size  
(DPA)



Ankle/Foot  
Hand/Wrist/Elbow coils  
of large size  
(DPA)

# A smarter way to care for patients

## Consistent Image Quality

Wide range of clinical applications in combination with advanced software.

## Patient Comfort

Non-claustrophobic system with a comfortable patient seat.

## Unique Applications

True-Motion, post-surgical imaging.

## Economics

Cost-effective consumption, easy installation and low running costs.



# Why choose the O-scan SMART?



Dedicated **multichannel coils** for excellent image quality.



Patient friendly.



**Image quality** covering your day to day needs in MRI imaging.



Need high throughput, choose **O-scan SMART** with Speed-Up and TR reduction technologies.



Low volumes or economic constraints? **O-scan SMART** is the perfect solution.



Minimal installation requirements.



## Sustainable MRI

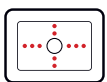
Low power consumption helium-free MRI systems. Limited installation space with smaller installation and maintenance construction.

**Agilexam**

faster examination workflow and consistent image quality for higher productivity.



Advanced imaging **O-scan SMART** includes optional features like 3D Isotropic, MAR, True-Motion and fast scanning technologies like SpeedUp and many more to support the advanced imaging functions.



Real-Time display for fast positioning.





# Esaote MRI

One of the top 10 diagnostic imaging providers, respecting the highest quality standards in production and upholding service processes.





160000501 Ver.01



## **Esaote S.p.A. - sole-shareholder company**

Via Enrico Meloni 77, 16152 Genova, ITALY, Tel. +39 010 6547 1, Fax +39 010 6547 275, [info@esaote.com](mailto:info@esaote.com)  
[www.esaote.com](http://www.esaote.com)

Technology and features are device/configuration-dependent. Specifications subject to change without notice. Information might refer to products or modalities not yet approved in all countries. Product images are for illustrative purposes only. For further details, please contact your Esaote sales representative.

 Italian design 